

HPTN Modelling Centre symposium

“Recent advances in mathematical modelling to inform HIV prevention research activities and directions”

IAS 2017 in Paris
Tuesday 25 July: 18:30 -20:30

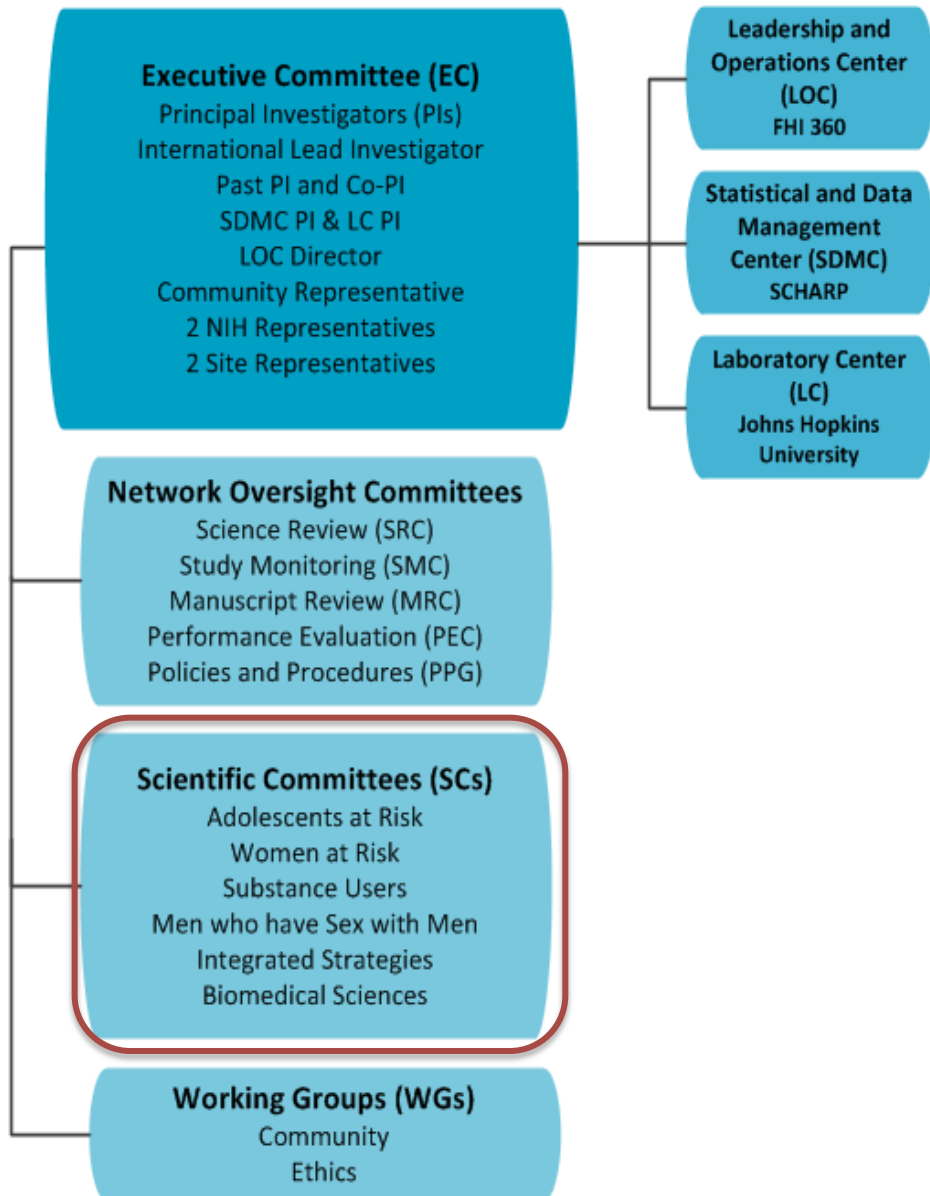


- The HPTN aims to develop new biomedical HIV prevention tools and improve the use of existing ones worldwide through integrated strategies, particularly for populations:
 - Men who have sex with men (MSM)
 - Women at high risk
 - Adolescent at risk
 - Substance users

HTPN groups and Committees



HPTN MODELLING CENTRE
IMPERIAL COLLEGE • FHCRG



Imperial College London



Marie-Claude Boily (Lead)
Kate Mitchell
Tim Hallett
Christophe Fraser

Statistical Center for
HIV/AIDS Research & Prevention

SCHARP

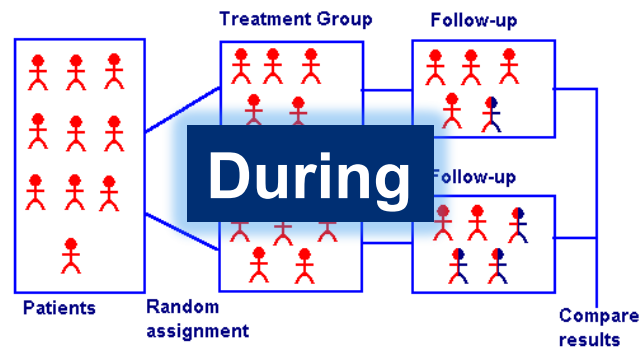


Dobromir Dimitrov

Our Role

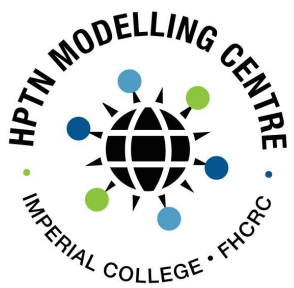
- Provide modelling support to HPTN research activities at different stages of trial development & inform research directions

Before



During

After



Our Role

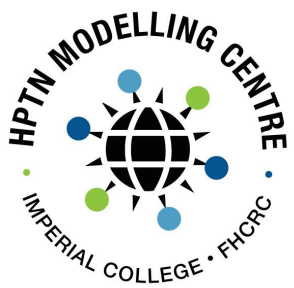
- Provide modelling support to HPTN research activities

- Inform trials

*Dimitrov
Prevost*

- Inform the design, conduct, interim and final analysis of clinical trials
- Assess the population-level impact of the roll-out of the HIV intervention – tested in trials

Mitchell



Our Role

- Provide modelling support to HPTN research activities

– Inform trials

*Dimitrov
Prevost*

- Inform the design, conduct, interim and final analysis of clinical trials
- Assess the population-level impact of the roll-out of the HIV intervention – tested in trials

Mitchell

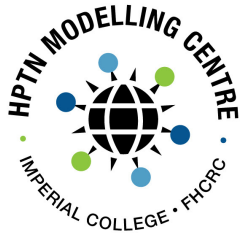
– Research directions

*Vickerman
Maheu-Giroux*

- Understand the transmission dynamics and key epidemic drivers of the HIV epidemic – who and what risk behaviour to focus on

Martin

- Conduct innovative modelling work to explore new lines of investigation
- Conduct methodological work to improve mathematical models and study designs.



HPTN Modelling Centre symposium

Recent advances in mathematical modelling to inform HIV prevention research activities and directions”

18:30 Introduction to HPTN Modelling Centre

- Marie-Claude Boily, Imperial College London, United Kingdom

18:35 Estimating the contribution of key populations towards sexual HIV transmission in Senegal

- Peter Vickerman, University of Bristol, United Kingdom

18:55 Women at risk, young people and HIV interventions in Ivory Coast: what is their impact on the national HIV epidemic?

- Mathieu Maheu-Giroux, McGill University, Canada

19:15 Estimating the impact of improvements in the HIV care cascade on HIV incidence among men who have sex with men in the US: mathematical modelling for HPTN 078

- Kate Margaret Mitchell, Imperial College London, United Kingdom

19:35 Recruitment of Female Sex Workers in HIV Prevention Trials: Could Efficacy Endpoints Be Reached More Efficiently in HPTN trials?

- Dobromir Dimitrov, Fred Hutchinson Cancer Research Center, United States

19:50 An efficient individual based model for the HPTN 071 (PopART) cluster randomised trial: design, implementation and application

- William Probert, University of Oxford, United Kingdom

20:10 Estimating the contribution of prison and impact of incarceration-related interventions on HIV and HCV epidemics among PWID

- Nathasha Martin, University of California San Diego, United State